

Our Location



Mt. Ishizuchi



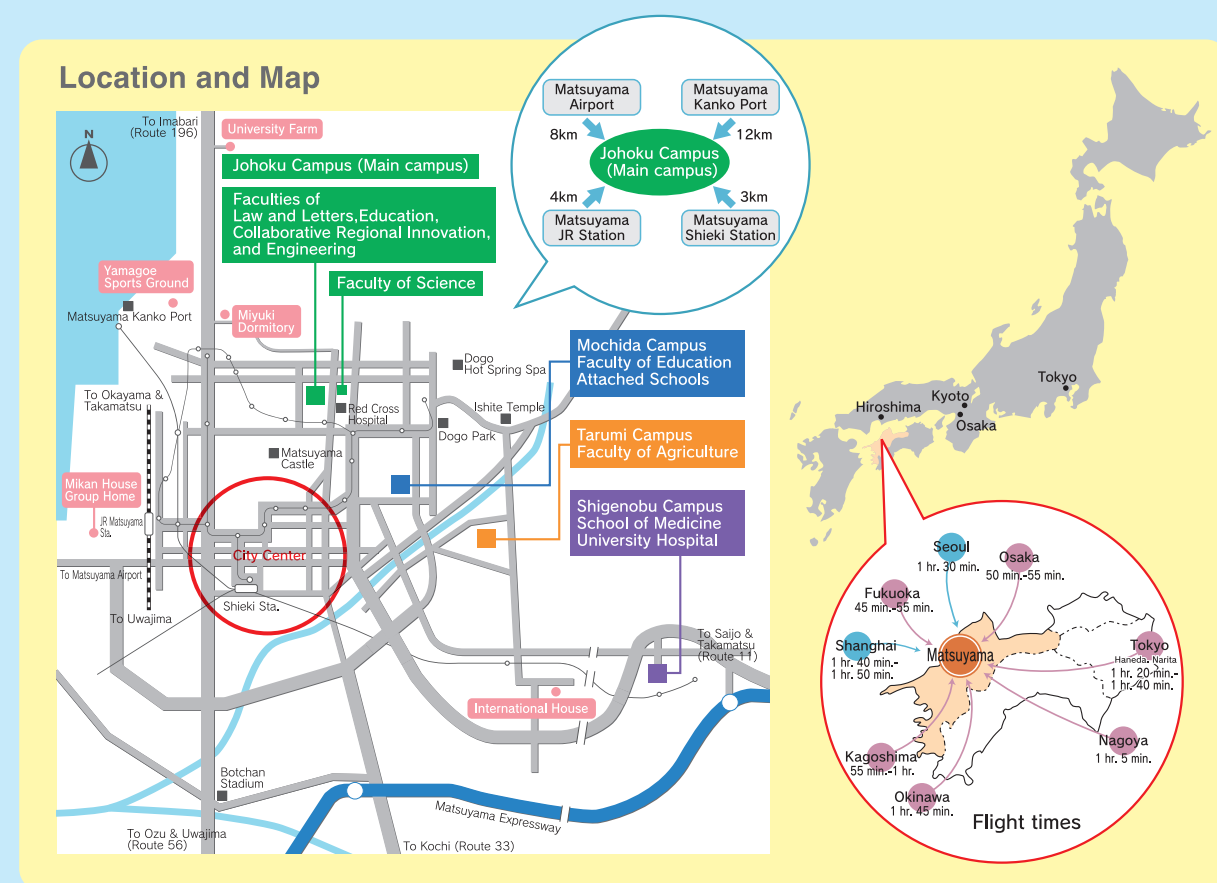
Shimanami Kaido Bridge



Dogo Hot Spring

Ehime University is located on the island of Shikoku, one of the four main islands of Japan. It is in the city of Matsuyama (pop. 500,000) which retains the friendly, relaxed atmosphere of the country while serving as a center of business and industry on the island. The city is flat so it is easy to cycle everywhere and the main campus is only a 5-minute ride away from the city center.

Matsuyama is nestled against a backdrop of hills facing the Seto Inland Sea, providing a mild climate, with temperatures ranging, on average, from 5°C to 27°C. Ehime Prefecture is known for: the Shimanami Kaido Bridge system, which links Shikoku to Honshu; Mt. Ishizuchi (1982m), the highest mountain west of Kyoto; and historical Dogo Hot Spring Spa, recently awarded two stars in the Michelin guide.



National University Corporation
EHIME
UNIVERSITY
JAPAN

Outline of Ehime University
 2018

Message from the President

Upon the reorganization into a National University Corporation in 2004, Ehime University adopted a new University Charter, with a policy of “becoming a university that is united as one,” based on which we have steadily moved forward to create a “student-centered university,” a “radiant regional university,” and a “university serving as a link to the world.” In order to enhance university governance, we have established four university wide organizations, (the Institute for Education and Student Support, the Institute for the Promotion of Science and Technology, the Institute for Collaborative Relations, and the Institute for International Relations, which are closely interlinked and horizontally deployed to enhance our management capabilities through sharing information and promoting communication within the university.

With a rapidly aging society and declining birth rates decreasing the population of 18-year-olds, as well as the rapid globalization and drastic systemic changes in society epitomized by Society 5.0, the environment surrounding higher education institutions, which are expected to nurture specialized talents and to promote academic developments in Japan, is constantly changing. We are currently in the midst of a trend where university sustainability should be considered from diverse perspectives. We at Ehime University are thus required to utilize our limited resources, enhance coordination with stakeholders in communities and industries, as well as with other universities, and promote initiatives exploiting our strengths and characteristics to the full.

In the third stage of our mid-term plan, we have created a vision to become a university that “leads our region and connects it to the world with striking originality.” Against this backdrop, with the newly established Faculty of Collaborative Regional Innovation, we will dedicate ourselves to cultivating talented individuals capable of leading regional communities for sustainable local development, enhancing our regional industry innovation capabilities through our diverse community-based research centers, and developing a unique international research hub specializing in advanced research fields, including ultrahigh-pressure science, coastal environmental science, and proteo-science.

You can look forward to seeing Ehime University take on new challenges as it aspires to be a “university trusted and loved by the local community.”

President of Ehime University
Professor
Yuichi Ohashi



We develop educational, research and social activities that contribute to society with a global perspective, in line with our principle of becoming "a university that **leads our region and connects it to the world with striking originality.**"

Strategy 1

Promote development of human resources that support the sustainable development of the region

We are proceeding with organizational and educational reforms by establishing a new faculty that addresses regional issues, including our status as a capacity development base for faculty, and we continue to be a university that **leads the region** by producing skilled human resources.

Specifically, as a local national university, it is our mission to take the initiative in regional development. To realize this goal, we implement educational reforms from the perspective of "human resource development," and advance our role in producing skilled human resources for the region.

Strategy 2

Strengthen the function of contributing to regional industry innovations

We continue to be a university that **leads the region** through activities which enhance "Community, People, and Jobs" by making use of our unique community-based research centers as well as our role as a COC/COC + business-based university.

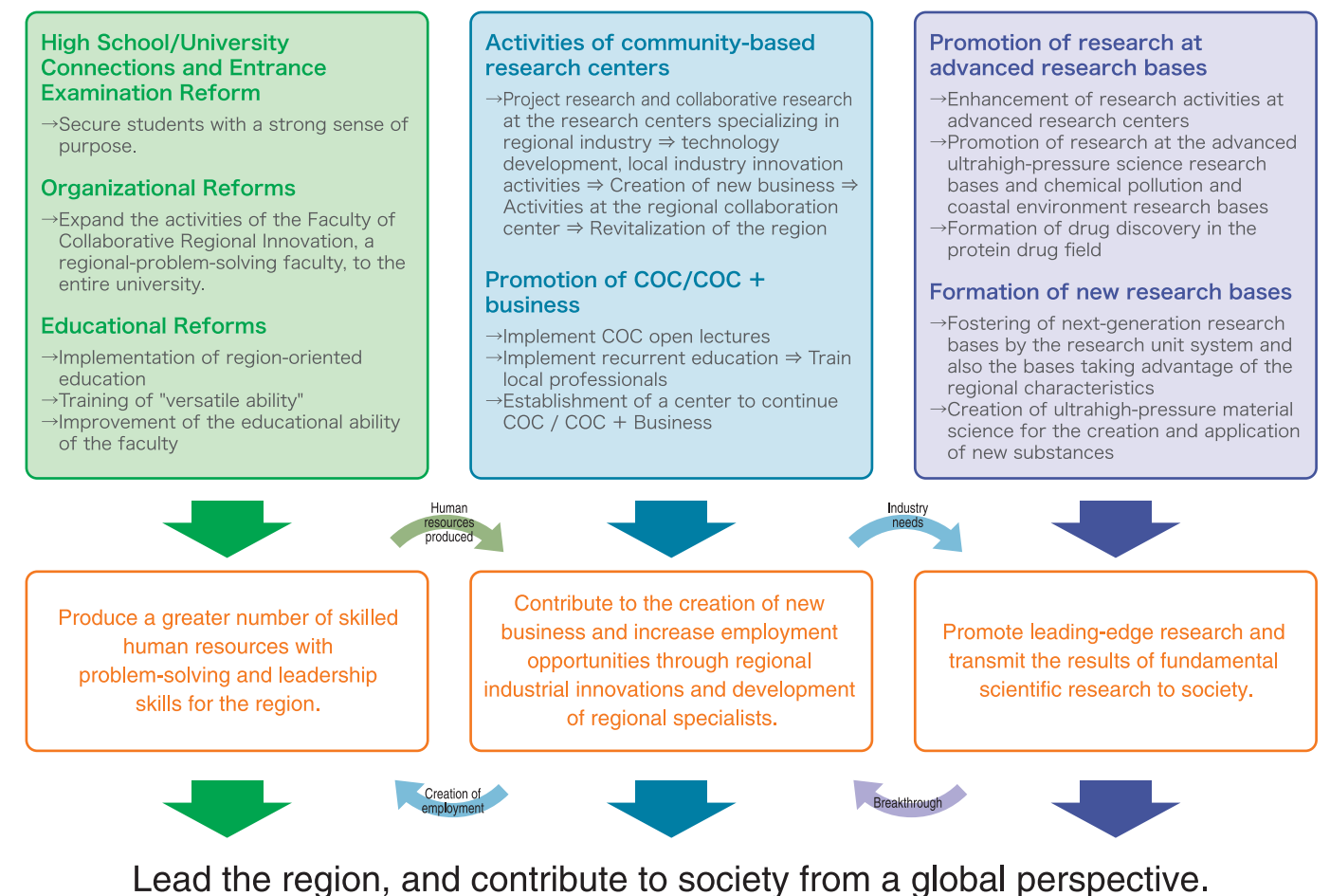
Specifically, we operate community-based research centers responding to each region's resources, nature, culture, industry, and their other needs. And as a local university, we are advancing our strategy to enhance "Community, People, and Jobs."

Strategy 3

Build and strengthen cutting-edge research bases to lead the world

Utilizing our advanced research centers in the fields of ultrahigh-pressure science, coastal environmental science and protein drug discovery, we foster world-leading research for the next generation, and we continue to be a university **connected to the world**, while serving in the local region.

Specifically, in order to contribute to society from a global perspective, we are advancing our strategy to promote leading-edge research to contribute to solving various issues, ranging from regional to global, at our advanced research centers.

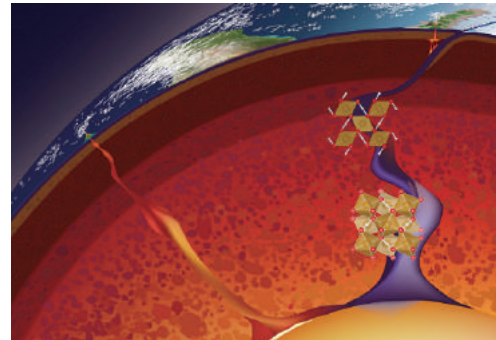


Geodynamics Research Center (GRC): International research hub leading "Ultrahigh-pressure Science"

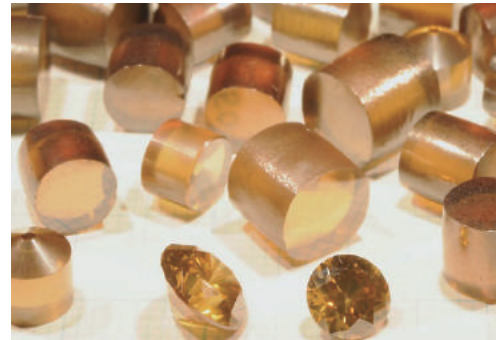
Geodynamics Research Center (GRC) was established in 2001 as one of three research centers that Ehime University promotes and supports intensively. GRC has grown as a leading center for "ultrahigh-pressure sciences" through many principal research funds and projects in Japan, such as Grant-in-Aid for Creative Scientific Research, Grant-in-Aid for Specially Promoted Research and one of three global COE programs in the field of geosciences. Since 2013, GRC has operated the Premier Research Institute for Ultrahigh-pressure Sciences (PRIUS), a Joint Usage/Research Center approved by the Japanese Ministry of Education, Culture, Sports, Science and Technology.

The research target of GRC is to investigate the structure, chemical composition, and dynamics of the deep Earth. Mankind has reached only about 10 km by drilling, which is shallow compared with the distance of 6,400 km to the center of the Earth. This is because the Earth's interior is a world under incredible conditions of ultrahigh temperature and pressure of over 5,000°C and 3,600,000 atm at the center. It is impossible to conduct direct exploration in such an extreme world. In order to explore this "unreachable" world, GRC has been conducting (1) Ultrahigh temperature and pressure experiments of minerals constituting the deep Earth by the development and utilization of an ultrahigh pressure apparatus that generates hundreds of thousands of atmospheres, and, (2) Numerical simulation on theoretical calculation. Using the world's largest ultrahigh pressure apparatus, installed by GRC, and the first principle calculation method based on quantum mechanics, we have achieved leading-edge research results, regarding deep Earth water, chemical composition of the lower mantle, and the core structure of the Earth.

As a spin-off of these techniques and research results, we are also promoting interdisciplinary research of novel materials that can only be synthesized under ultrahigh pressures. The representative is the world's hardest material, the "Nano-Polycrystalline Diamond (NPD)". At present, it is possible to synthesize NPDs of a size of about 1 cm, and its industrial use as an ultrahard material is proceeding along with its promotion in advanced research as an important material in international collaborative research.



Newly discovered hydrous mineral and circulation of deep water suggested by GRC



The world's hardest material, "Nano-Polycrystalline Diamond (NPD): HIME-Dia," synthesized by GRC

Vitalization of Local Society and Industry by a Community-based Research Center

Functioning as a "regional core," Ehime University has established community-based research centers in the prefecture and is proceeding with research, educational, and social contribution activities. As one of our community-based research centers, the Paper Industry Innovation Center opened in Shikokuchuo City in April 2014. It is a research center that aims to promote academic research which will contribute to the development of the paper industry and to the revitalization and development of the local community.

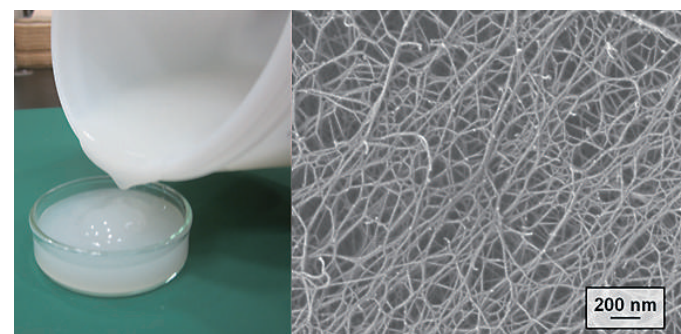
The Center is conducting research on the effective utilization of waste (paper sludge incinerated ash: PS ash) discharged in the papermaking process, research on the preparation of cellulose nanofibers (CNF, an advanced high-performance material obtained from wood, pulp, and pericarp of citrus, all special products of Ehime Prefecture), as well as applied research for the development of new paper products using CNF.

As a result of the above efforts, we have developed a road paving block using PS ash which was introduced for use in municipal parking lots in January 2016. In addition, we have developed an apparatus for the continuous dehydration of CNF suspension, and achieved a high efficiency concentration of CNF and also succeeded in the development of gas barrier paper using CNF. From citrus pericarp, we have established a preparation technique of CNF under mild conditions and the prepared CNF is expected to be applied for use in cosmetics.

In March 2018, with great support from Ehime Prefecture, Shikokuchuo City and paper industry related companies, we built a new facility for this Center and renewed the laboratory and lecture room (located in the Ehime Institute of Industrial Technology Paper Technology Center). Moving forward, we will further promote industry-academia-government collaboration, and contribute to the revitalization and development of local society and the paper industry.



Paper Industry Innovation Center



Cellulose Nanofibers

Promotion of Human Resource Development to Support Regional Sustainable Development: Faculty of Collaborative Regional Innovation

Ehime University established the Faculty of Collaborative Regional Innovation in April 2016 under the strategic objective of contributing to the sustainable development of the community by producing a greater number of skilled human resources with problem solving and leadership skills for the region.

The Faculty of Collaborative Regional Innovation fosters highly trained human resources who can plan and draft problem solving strategies by collaborating with various stakeholders, and have "the ability of co-creation with society" to lead the local community to in the creation of value.

Also, we are conducting transdisciplinary education which seeks the unification of knowledge by utilizing the thinking ability for problem solving to think about issues from the perspective of both humanities and sciences, and also Servant Leadership to collaborate with friends and colleagues by strengthening the relationship with them. We are also conducting community-based practical education such as fieldwork and internships with the collaboration of students, teachers, and regional stakeholders.

One of the facets of this community-based, practical education is a project to develop the branding and promotion of "Hime no Mugibatake", bread made from naked barley produced in Ehime Prefecture, and is carried out in collaboration with the prefecture.

Ehime University is developing educational reforms initiated by the Faculty of Collaborative Regional Innovation to apply throughout the university, and will promote organizational and educational reforms in other faculties as well to meet social needs.



Faculty of Collaborative Regional Innovation



A community-based practical education class

Career Development Program for International Students



In Japan, as one of the efforts aimed at globalization, the Ministry of Education, Culture, Sports, Science and Technology set a goal of bringing 300,000 international student to Japan, and Japanese universities are required, in addition to expanding the acceptance of international students and creating an environment in which students can study in a safe environment, to train them to become human resources who will contribute to the globalization of Japanese society by joining Japanese companies, or starting businesses in Japan after graduation. Ehime University has 138 academic exchange agreements in 34 countries/regions and accepted 304 international students from 35 countries/regions as of May 2018, with the aim of creating a university that produces international talents as well as a university that attracts people from all over the world.

In 2007, as support for the employment of international students in Japan, we started the "Global Human Resources Development Program," which was adopted in the Career Development Program for International Students created by the Ministry of Economy, Trade and Industry (named "Asia Human Resource Fund"), and in 2014, we ranked 13th nationwide and first amongst Japanese national universities in the International Student Local Area Employment Rate Survey. As the program's 10 year record and achievements were highly evaluated, the university was chosen as one of 12 nationwide bases of the international student employment promotion program of the Ministry of Education, Culture, Sports, Science and Technology, and in 2017, we started the "Career Development Program for International Students", founded by the Government of Japan, which is strengthened

and developed from the past programs.

In addition to Business Japanese Education, Career Education, and Internship, the new program provides networking events with alumni/alumnae, corporate tours, and individual consultation by employment counselors specializing in counseling for foreign students. We provide scholarships for particularly motivated and high achieving students. Also, in order to help them to settle in after joining a Japanese company, we provide support to prevent them from being isolated in the workplace.

Business Japanese



- ★ Learn Japanese language and business manners effectively with a suitable curriculum for each stage of school life.
- ★ Utilize e-learning and self-study materials for acquiring a high level of Japanese proficiency.

Career Education



- ★ Get a better understanding of Japanese people and society through a four-year course (at maximum) of cultural exchanges and company visits.
- ★ Develop an ability to take the initiative in the globalization of the workplace.

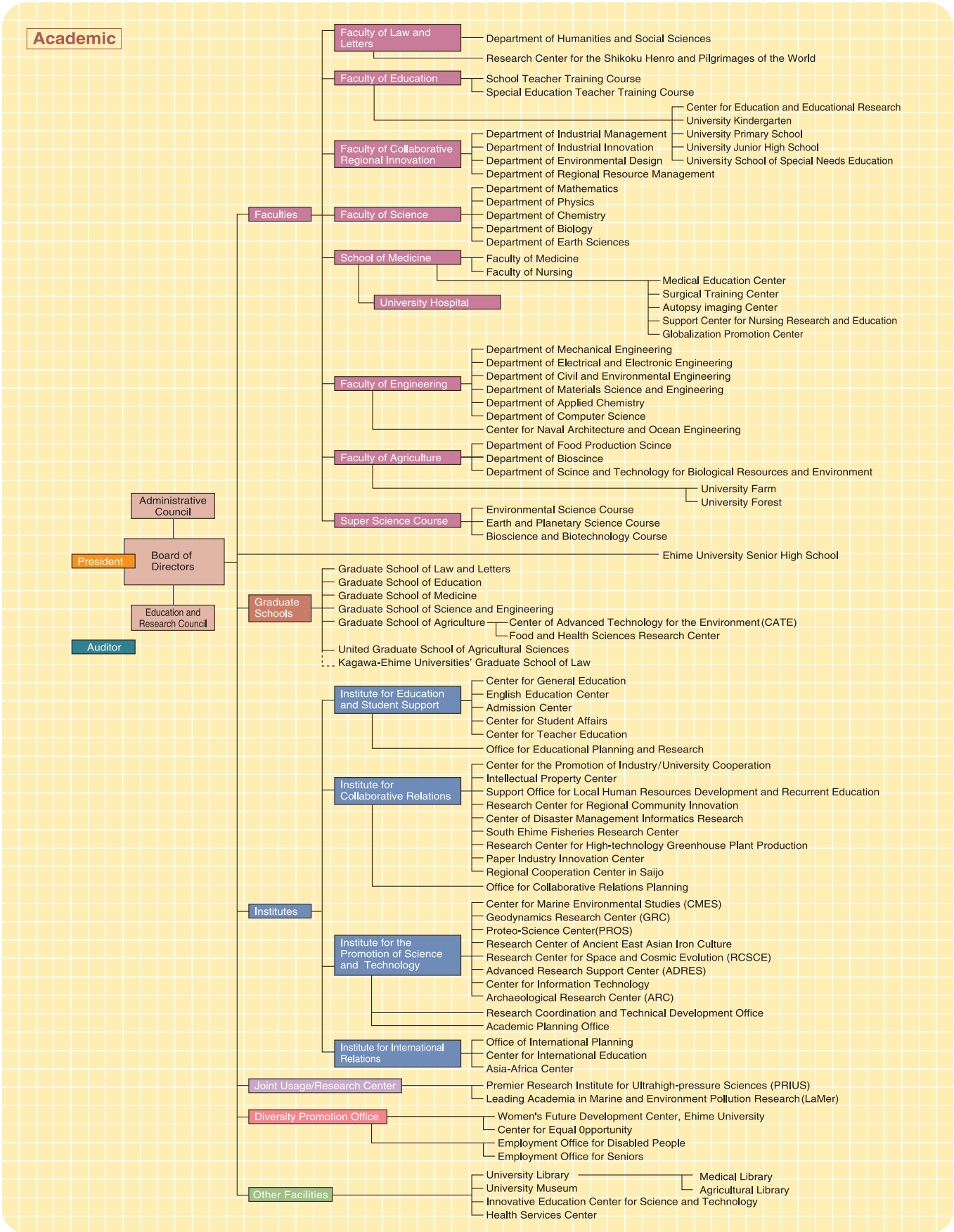
Internship



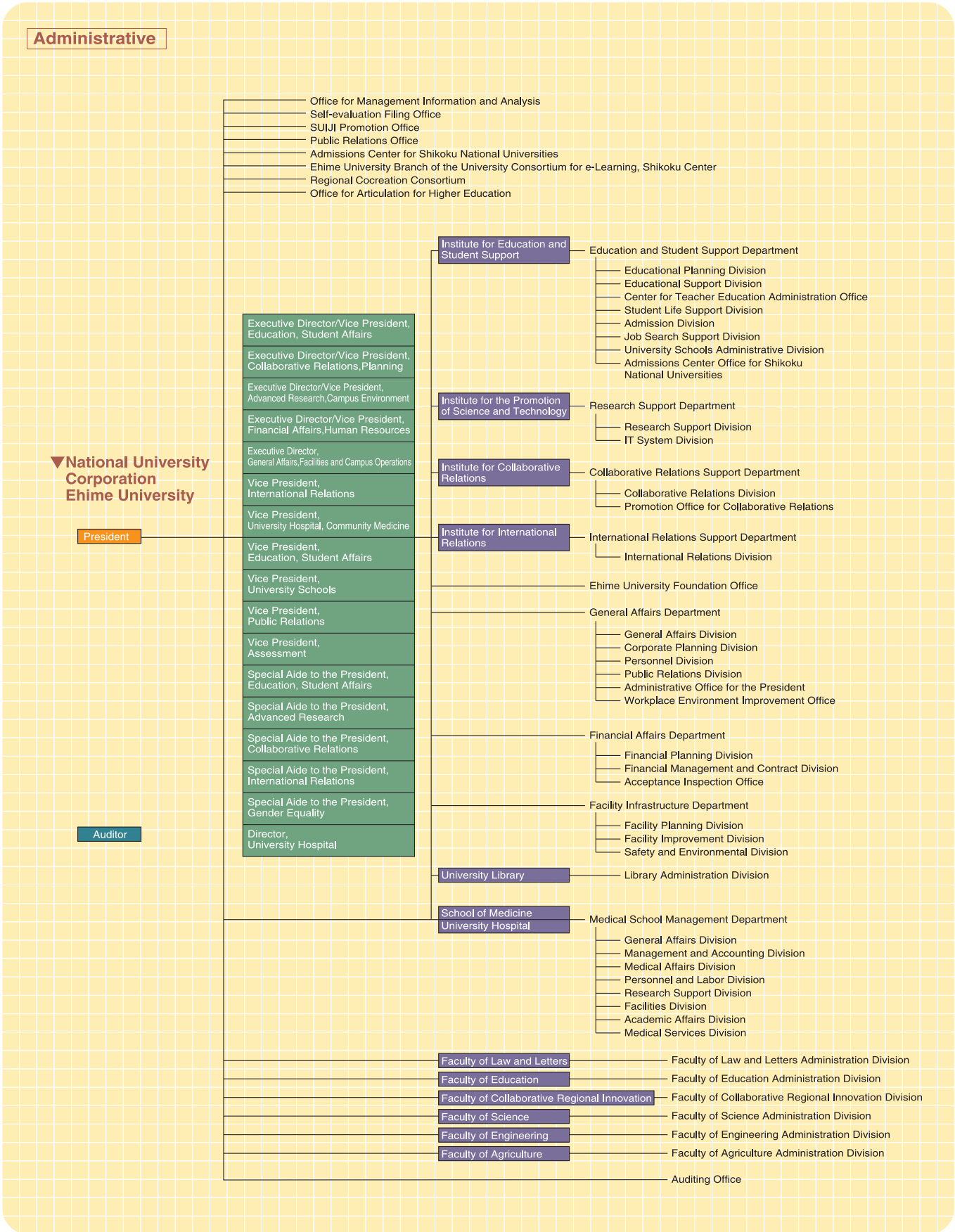
- ★ Build up relationships with Japanese people through a one-month(in total) internship before graduation.
- ★ Participate in various types of internship; problem-solving, company matching, and a joint one with Japanese students.

Ehime University Organization

(As of July 1, 2018)



(As of July 1, 2018)





International Students by Faculty and Country

(As of May 1, 2018)

	Undergraduate Level								Graduate Level						United Graduate School of Agricultural Sciences	Total
	General Education	Law and Letters	Education	Collaborative Regional Innovation	Science	Medicine	Engineering	Agriculture	Law and Letters	Education	Science and Engineering (Science)	Medicine	Science and Engineering (Engineering)	Agriculture		
Bangladesh												1		1	18	20
Brazil				1												1
Cameroon														1		1
China		32		3	7		25	4	15	2	5	2	5	3	4	107
Costa Rica		1														1
Egypt													1			1
eSwatini														1		1
Ethiopia							1									1
France									1							1
Gabon		1														1
Germany		1														1
Ghana														1		1
India													1			1
Indonesia											7	1	22	7	17	54
Kenya													1			1
Republic of Korea		16	2		5		3	2	1				4		1	34
Lesotho													1			1
Malaysia		1					16						1			18
Mexico											1					1

International Students by Faculty and Country

(As of May 1, 2018)

	Undergraduate Level								Graduate Level						United Graduate School of Agricultural Sciences	Total
	General Education	Law and Letters	Education	Collaborative Regional Innovation	Science	Medicine	Engineering	Agriculture	Law and Letters	Education	Science and Engineering (Science)	Medicine	Science and Engineering (Engineering)	Agriculture		
Mongolia												1				1
Mozambique													2	2	1	5
Myanmar								1						1		2
Nepal															3	3
Nigeria														1		1
Philippines										1			4			5
Romania		1														1
Senegal													1	2		3
South Africa													1			1
Taiwan		2	1	2	1						1			1		8
Thailand												1			8	9
Uganda														1		1
United Kingdom					1											1
Vietnam		1					4	4			1			1	3	14
Yemen													1			1
Zambia													1			1
Total	0	56	3	6	14	0	49	11	17	3	16	6	45	23	55	304
Japanese Gov. Scholarship Students		2		1			1	1		1	4	1	5	1	31	48

Ehime University Students, Academic and Administrative Staff (As of May 1, 2018)

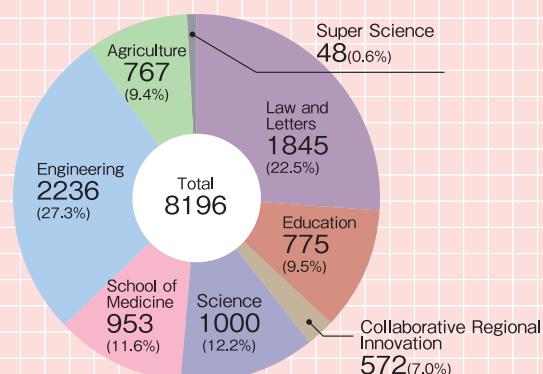
University Staff

Directors	8
Professors	273
Associate Professors	285
Senior Assistant Professors	80
Assistant Professors	159
Research Associates	6
Teachers(Addiliated Schools)	111
Subtotal	922
Administrative Staff	336
Technical Staff	990
Subtotal	1326
Total	2248

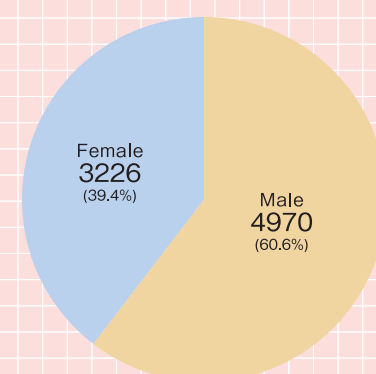
Academic Staff by Country

Country	Fulltime Faculty	Adjunct Faculty	Researcher	Total
Australia		3		3
Bangladesh		2	1	3
Barbados		1		1
Canada		2		2
China	10	2	5	17
Czech		1		1
France	1		1	2
Germany	1			1
India		3		3
Indonesia			1	1
Kenya			1	1
Nederland			1	1
Nepal	1		1	2
Russia	1	1	1	3
South Korea	6	1	2	9
United kingdom		3		3
United States	5	2		7
Vietnam			1	1
Total	25	21	15	61

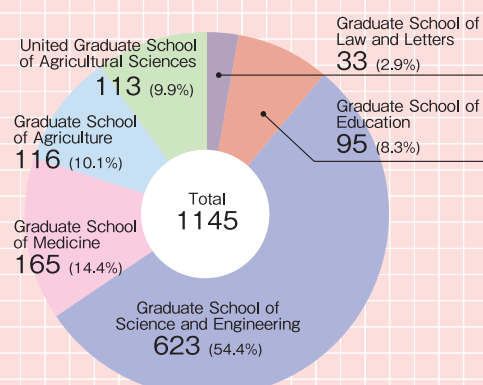
Undergraduate Students (by Faculty)



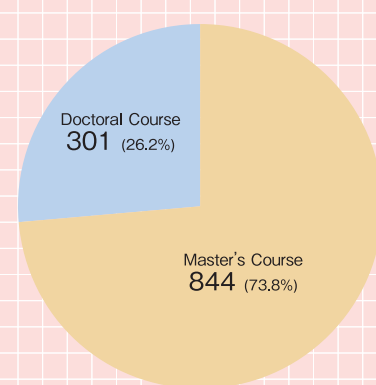
Undergraduate Student Male/Female Ratio



Graduate Students (by Field of Study)



Graduate Student Ratio



Academic Calendar 2018

April 1
1st Semester begins

April 6
Entrance ceremony

April 13
United Graduate School for Agricultural Sciences (UGAS) Entrance Ceremony

August 7 - September 30
Summer vacation

September 18
UGAS Graduation

September 23
1st Semester ends

September 24
2nd Semester begins

October 15
UGAS Entrance Ceremony

November 11
Anniversary of the Founding of Ehime University

December 24 - January 7
Winter vacation

March 18
UGAS Graduation

March 25
Graduation

March 31
2nd Semester ends

Academic Fees & Living expenses in Matsuyama

- Academic Fees (April 2018)
 - Admission
¥282,000
 - Basic Tuition
¥267,900/semester
¥535,800/year
- Average monthly living expenses (includes housing)
¥60,000~¥100,000
- Housing expenses
 - University housing
¥15,000~20,000/month
 - Private housing
¥20,000~35,000/month
- Part time job income
¥800~¥1,000/hour

For Prospective Students and Researchers

For those who wish to study or do research at Ehime University basic information about study in Japan can be found on the Japan Student Services Organization (JASSO) website https://www.jasso.go.jp/study_j/sgtj_e.html. For more specific information go to the university website: <https://www.ehime-u.ac.jp/english/>

1. Undergraduate level: To be a full-time student, fluency in Japanese is required because the medium of instruction is Japanese. It may also be possible to come for a one-year exchange if you are a student in one of our partner institutions.

2. Research/Graduate School: Have a research proposal ready and then try to contact a researcher here. If you have trouble finding someone in your field of research, you can email the International Relations Office (see below). There are some Master's and Doctoral programs offered in English through the Agriculture, Science and Engineering Graduate Schools.

Inquiries: International Relations Office kokuryu@stu.ehime-u.ac.jp